

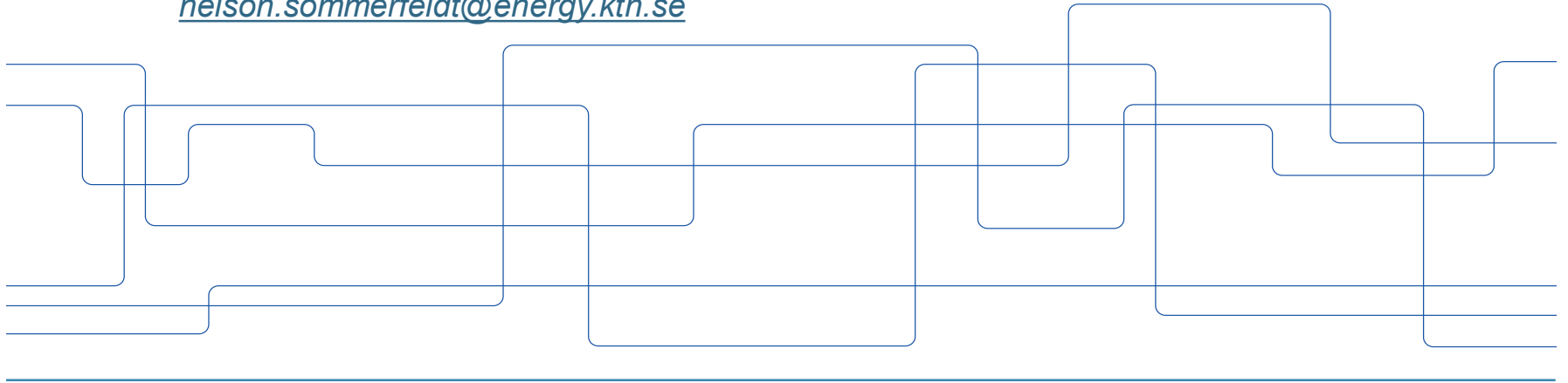


Sustainable energy choices for homeowners

What is the best fit?

Nelson Sommerfeldt, PhD – Researcher in Prosumer Energy Systems

nelson.sommerfeldt@energy.kth.se





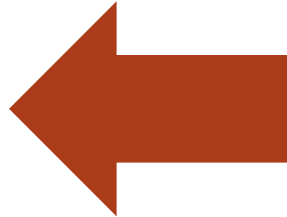
Inspiration – Solar Maps

What did we learn?

- Nerds love it, Normies (mostly) like it
- Everyone likes low barrier to entry
- Surprising user goals / perceptions

What can we do better?

- Building geometry / details
- Need better UX and UI
- More tech / alternatives



Sustainable energy choices for homeowners – What's the best fit?

Kalkylatorn
Räkna själv

22 % självförsörjning
86 500 kr investering
16.6 år återbetalningstid

Installerad effekt (kW): 5.5 kW ?

✓ Visa mer...

Sammanfattning

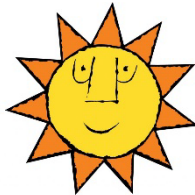
Gå vidare med intresseanmälan →



Objective and Approach

This project aims to democratize distributed energy systems design and empower building owners with trustworthy information for holistic analysis of sustainable technologies

- 1) Identify minimum viable data requirements and map them to relevant sources for automation
- 2) Assemble prosumer energy models into a flexible platform and develop automated design algorithms
- 3) Publish the code-base in an open source package for easy collaboration and transfer throughout Sweden



Key Opportunities and Challenges

Opportunities



Rapid development of urban energy models



Public education resource for building owners



Scalable tool for all Swedish cities

Challenges



Privacy, paywalls, data gaps, and consensus



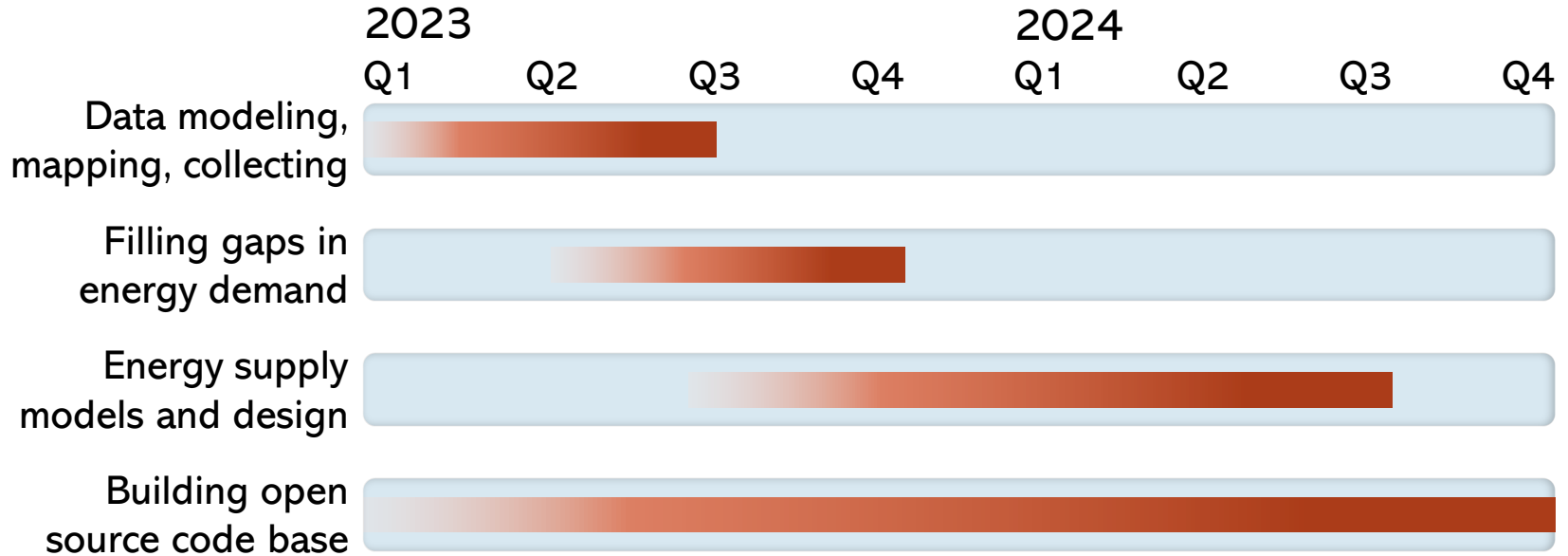
End user experience – accessibility and bias



Ease of adoption for diverse stakeholders



Timeline





Sustainable energy choices for homeowners

What is the best fit?

Nelson Sommerfeldt, PhD – Researcher in Prosumer Energy Systems

nelson.sommerfeldt@energy.kth.se

